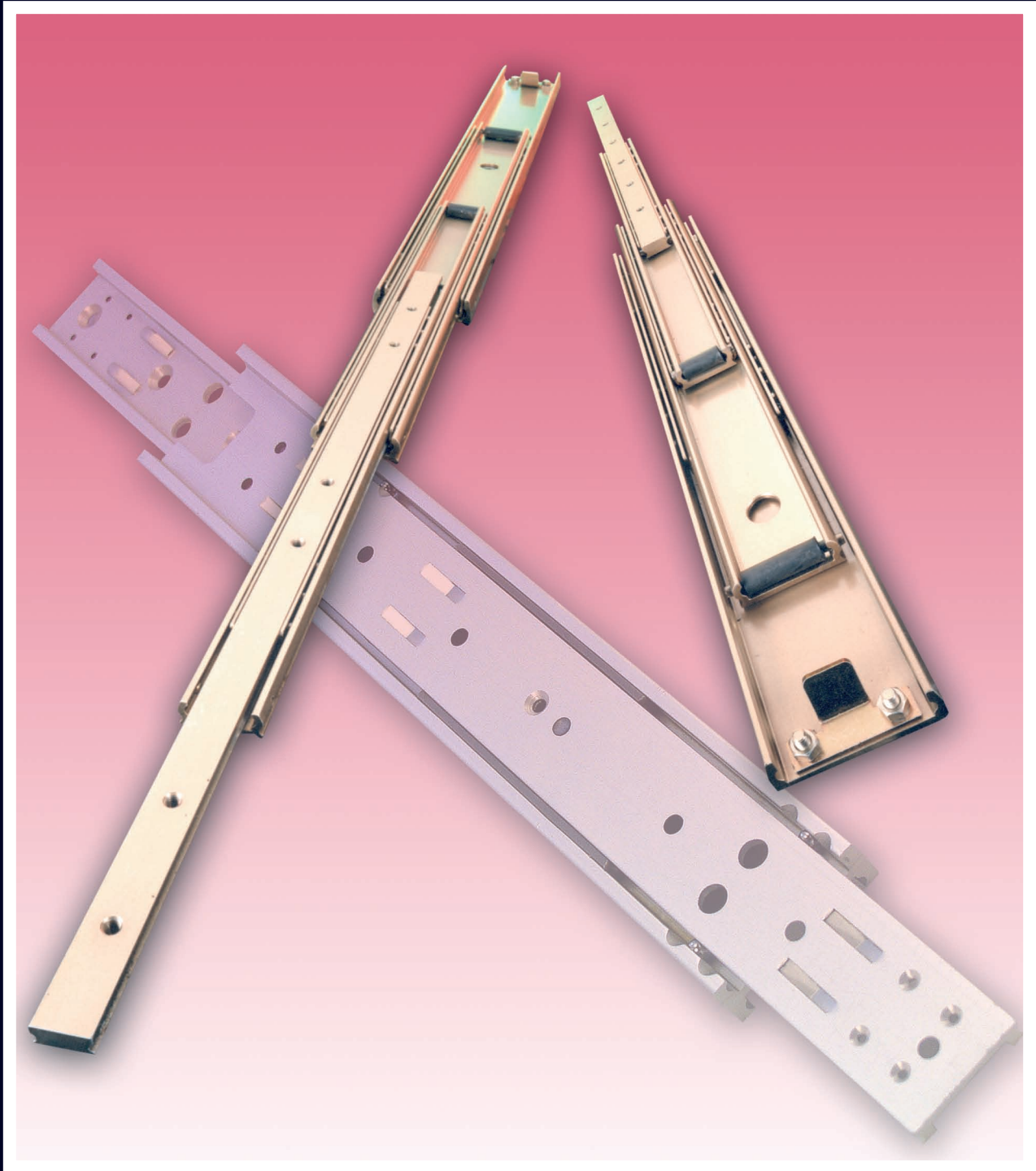


LIGHT TELESCOPIC RAIL



ROLLCO LINEAR SOLUTIONS

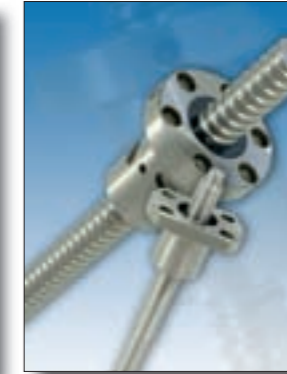
ONE PARTNER FOR LINEAR COMPONENTS



COMPACT RAIL:
No more problems with parallelism. Low noise guiding with lifetime lubricated bearings.



STAINLESS:
Stainless is a simple and cost effective linear bearing system.



BALL SCREWS:
Cylindrical and flange-nut.



EASY RAIL:
The strong solution for short strokes.



TELESCOPIC RAIL:
Heavy. The strongest solution for extraction.



MINIATURE:
Range from 3 mm up to 15 mm.



HEAVY LINE:
Complete unit with belt.



LINEAR RAIL SYSTEM:
Monorails. Compatible dimension. Very competitive product-range.



BALL BEARINGS:
Linear ball bearings and hardened steel shaft.



ECO LINE:
The simple solution for shields and small loads.



UNI LINE:
Complete unit saves time and money.

This is a short description of the most common questions we will ask before we propose a telescopic slide.

1: Load

What is the load of the unit. In this Catalogue you can find solutions from 30 kg/pair up to 300 kg/pair. Please notice that these values are valid for evenly distributed loads. If more capacity is needed please look in the Heavy Telescopic Catalogue or contact us. We are also assembling a wide range of customised telescopic slides according to your needs.

2: Side loads

Will your unit be exposed for side loads or is the distance between the pair of slides very large (> two times the closed length of the slides)? Please contact Rollco.

3: Extension

In this Catalogue you will find extensions from 300 mm up 1400 mm. Please contact us if you need longer or shorter movements. We do have telescopic solutions up to 3500 mm.

4: Extension in % of closed length

Do you need 100% extension? In this catalogue you will find many products with 100% extension and some with extension up to 140%. Rollco can supply extension from 0 up to more than 300%. For special extension, please contact us.

5: Horizontal or vertical movement

Is it a horizontal movement? In case of vertical movements please contact Rollco. We have specific solutions for vertical movements.

6: Service or automation unit

Service unit with limited amount of movements or telescopic solution for automation with a large quantity of movements/day. For automation products please contact Rollco. We have several different solutions for automation.

7: Deflection

We have solutions in this catalogue with different materials. If very high stiffness is needed we recommend the hardened bearing steel Telescopic types, like DSS, DE, ASN and DBN. You will find these types in our Heavy Telescopic Catalogue.

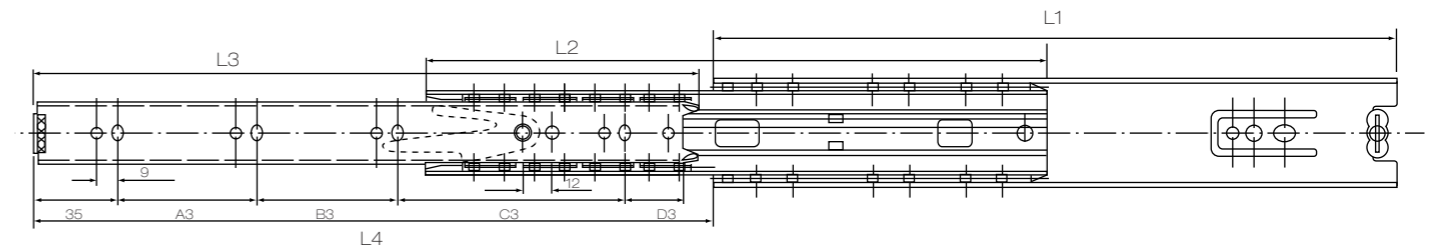
8: Quantities required

All the slides you will find in this Catalogue are "off-the-shelf" products. In case of large quantities you can take the advantage of the cost saving production method that makes it possible to assemble an economical customised solution. Please contact Rollco for a proposal.

9: Environment

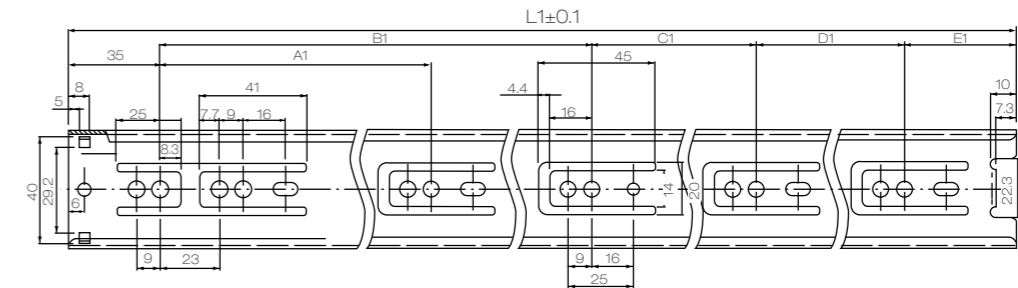
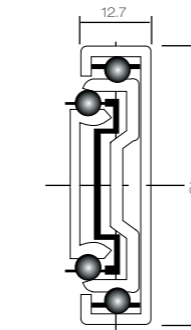
We have solutions with Zink plating, aluminium, Chemical Nickel Plating and stainless. Please contact us if you have a demand for special surface treatments.

3045 100% Extension



Specification Extension Length

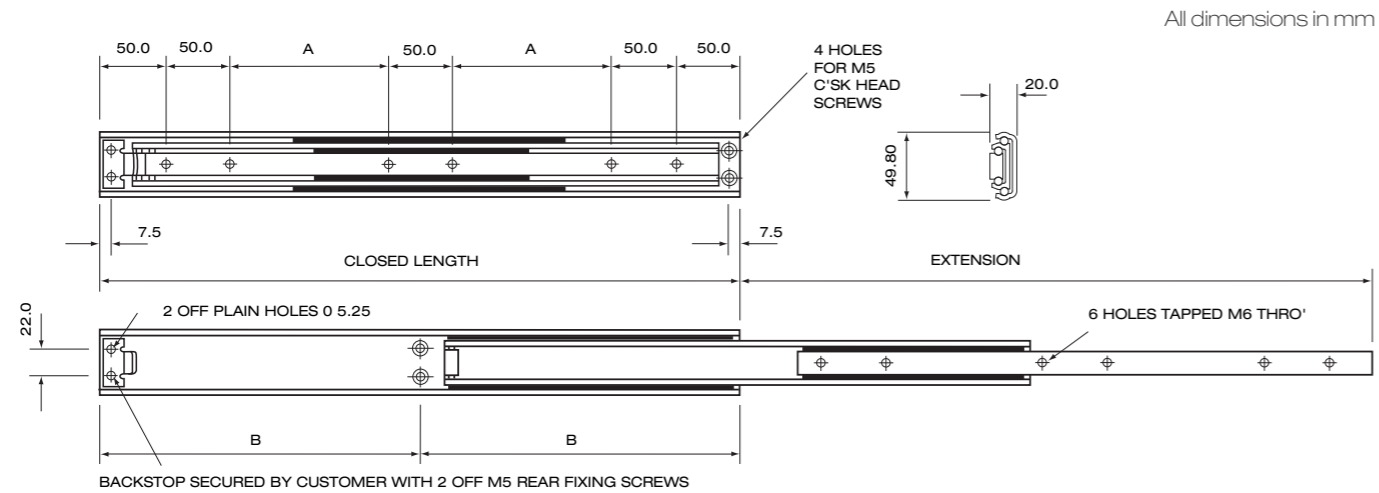
Type	L4	L1	L2	L3	A3	B3	C3	D3
3045-300	305	300	284	295.5	96	128	-	31.5
3045-350	356	350	334	345.5	96	64	96	49.5
3045-400	406	400	384	395.5	96	64	128	67.5
3045-450	457	450	434	445.5	96	96	160	53.5
3045-500	508	500	484	495.5	96	96	192	71.5
3045-550	559	550	534	545.5	96	128	224	57.5
3045-600	610	600	584	595.5	96	160	224	75.5
3045-650	660	650	634	645.5	96	160	256	93.5
3045-700	711	700	684	695.5	96	192	256	111.5



Specification

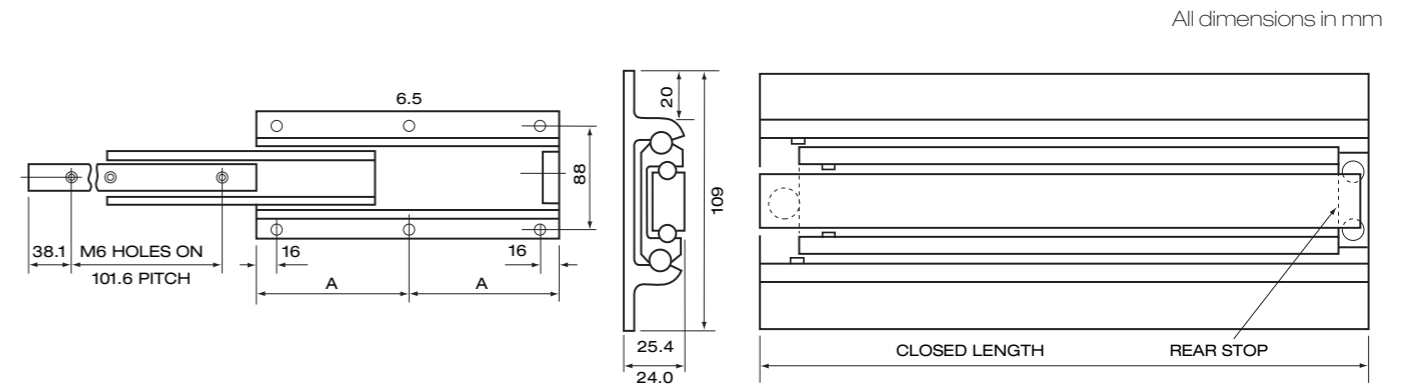
Type	L1	A1	B1	C1	D1	E1	Load/pair Kg
3045-250	250	128	-	-	-	-	45
3045-300	300	128	192	-	-	73	45
3045-350	350	128	224	-	-	91	45
3045-400	400	128	224	96	-	45	45
3045-450	450	128	224	128	-	63	45
3045-500	500	128	224	128	64	49	45
3045-550	550	128	224	128	96	67	45
3045-600	600	128	224	128	128	85	45
3045-650	650	128	224	128	192	71	45
3045-700	700	128	224	128	224	89	45

5030 Range of Slides 100% Extension



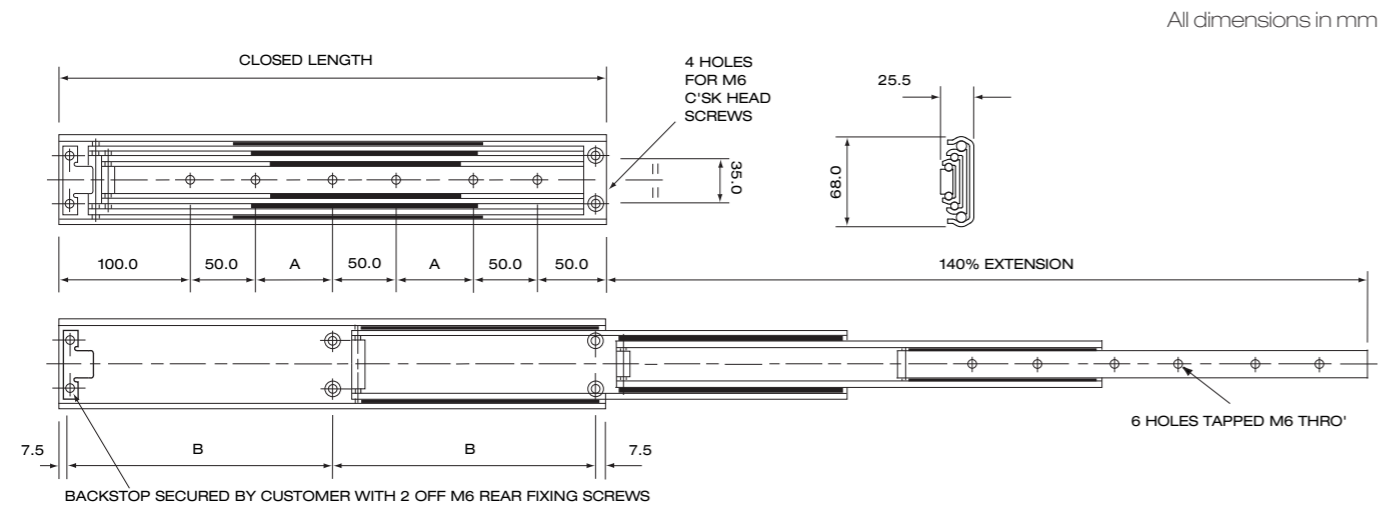
Type	Closed Length	Extension Length	No. of Fixing Holes		Load Per pair	
			A	B		
5030-300	300	300	100	150	4	190
5030-350	350	350	50	175	6	183
5030-400	400	400	75	200	6	175
5030-450	450	450	100	225	6	165
5030-500	500	500	125	250	6	155
5030-550	550	550	150	275	6	145
5030-600	600	600	175	300	6	137
5030-650	650	650	200	325	6	125
5030-700	700	700	225	350	6	118
5030-750	750	750	250	375	6	105
5030-800	800	800	275	400	6	95
5030-850	850	850	300	425	6	83
5030-900	900	900	325	450	6	72
5030-950	950	950	350	475	6	60
5030-1000	1000	1000	375	500	6	50

5006 Range of Slides 100% Extension



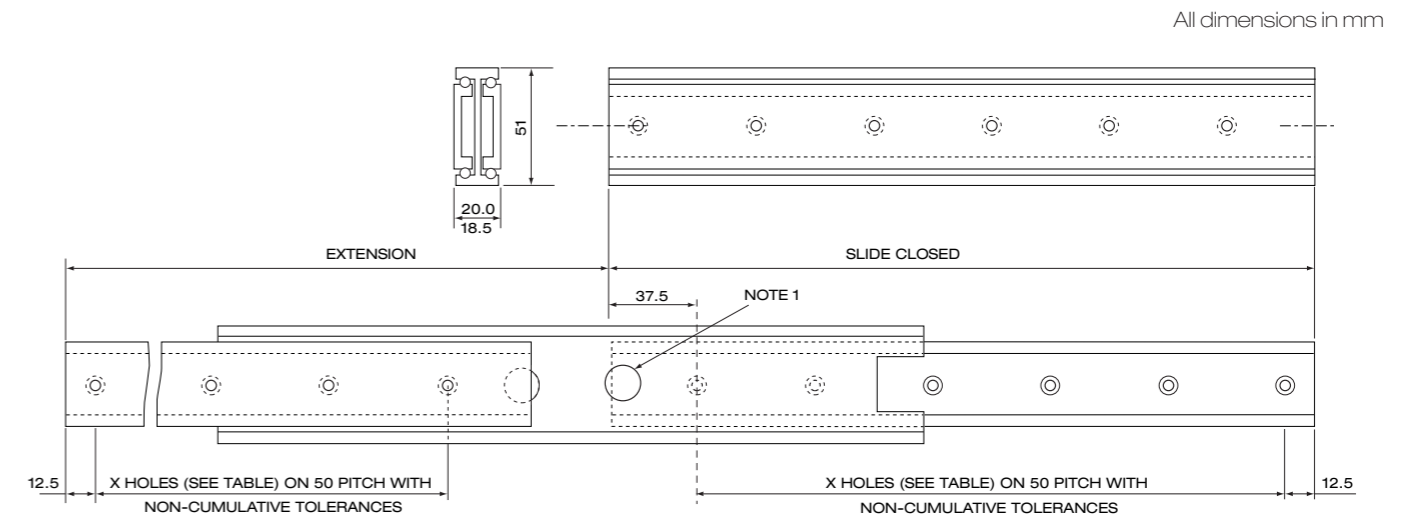
Type	Closed Length	Extension Length	No. of Fixing Holes	Load Per pair		
				(Lying)	(Standing)	
5006-300	300	300	150	3	70	110
5006-350	350	350	175	3	62	105
5006-400	400	400	200	4	58	98
5006-450	450	450	225	4	50	90
5006-500	500	500	250	5	48	82
5006-550	550	550	275	5	41	78
5006-600	600	600	300	6	39	72
5006-650	650	650	325	6	38	70
5006-700	700	700	350	7	38	69

5040 Range of Slides 140% Extension



Type	Closed Length	140 % Extension Length	No. of Fixing Holes		Load Per pair
			A	B	
5040-300	300	420	50	142.5	4
5040-350	350	490	25	167.5	5
5040-400	400	560	50	192.5	6
5040-450	450	630	75	217.5	6
5040-500	500	700	100	242.5	6
5040-550	550	770	125	267.5	6
5040-600	600	840	150	292.5	6
5040-650	650	910	175	317.5	6
5040-700	700	980	200	342.5	6
5040-750	750	1050	225	367.5	6
5040-800	800	1120	250	392.5	6
5040-850	850	1190	275	417.5	6
5040-900	900	1260	300	442.5	6
5040-950	950	1330	325	467.5	6
5040-1000	1000	1400	350	492.5	6

210 Non Lock 100% Extension

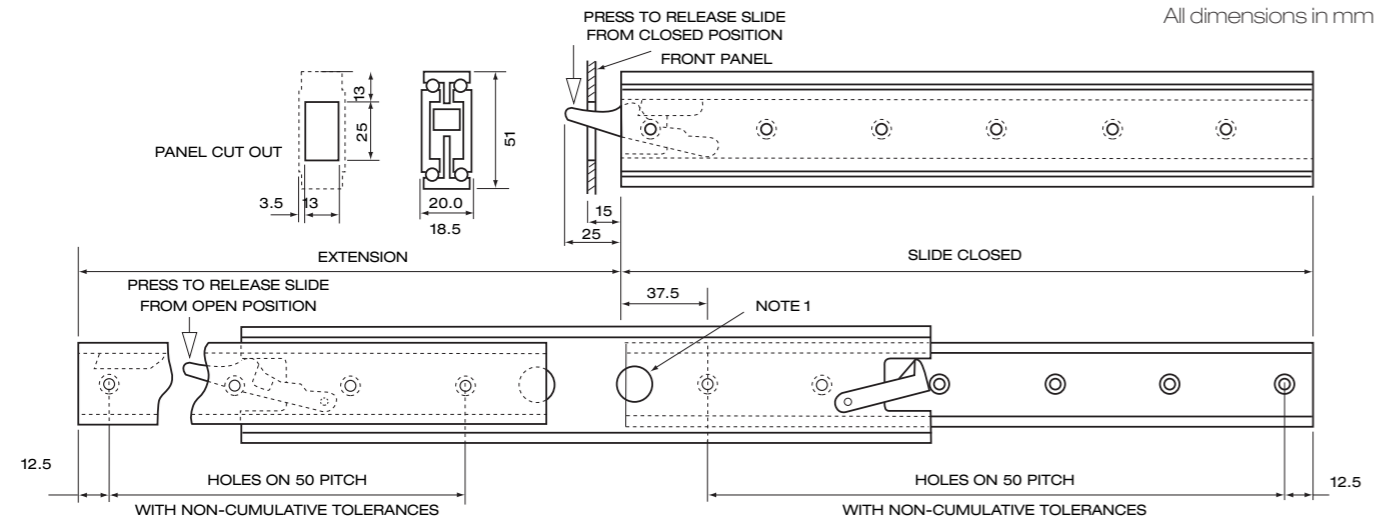


Note 1: 15 mm dia. hoses in centre below easy access to fixing holes. M5 countersunk head screws to BS4183 are recommended for fixing.

Note 2: Elongated holes should be provided in either the framework or chassis to give adjustment if it is necessary for the panel to fit tight against the framework.

Type	Closed Length	Extension Length	No. of Fixing x-Holes	Load Per pair
				Kg
210-300	300	330	6	55
210-350	350	380	7	62
210-400	400	430	8	71
210-450	450	480	9	78
210-500	500	530	10	84
210-550	550	580	11	88
210-600	600	630	12	90

220/230 Lock In and Lock Out 100% Extension

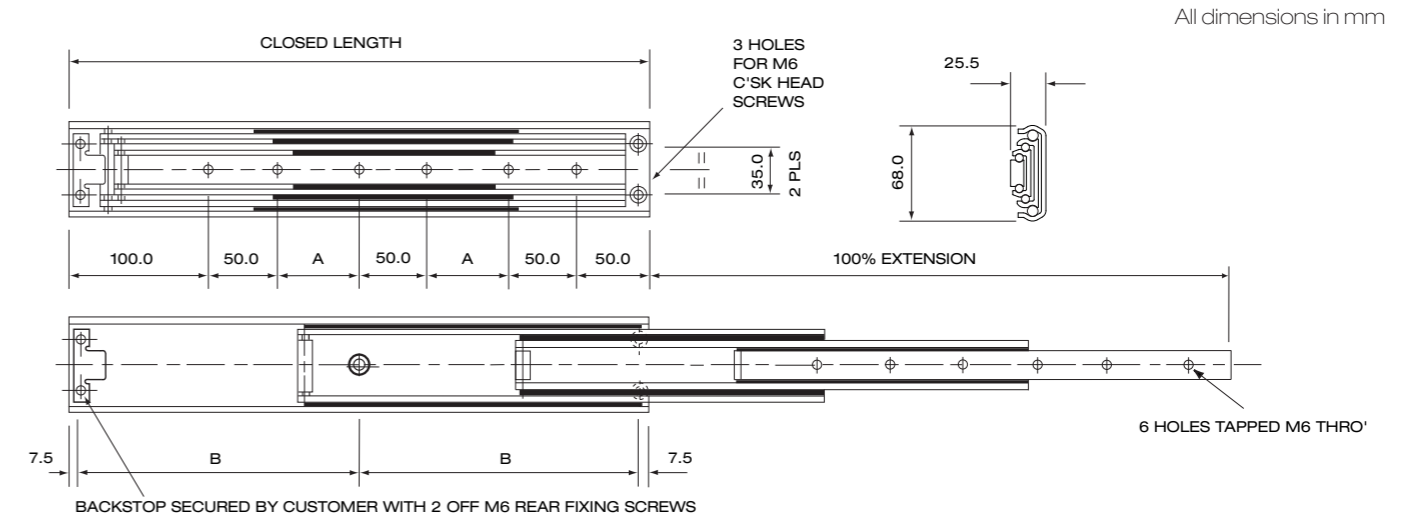


Note 1: 15 mm dia. hoses in centre below easy access to fixing holes. M5 countersunk head screws to BS4183 are recommended for fixing.

Note 2: Elongated holes should be provided in either the framework or chassis to give adjustment if it is necessary for the panel to fit tight against the framework.

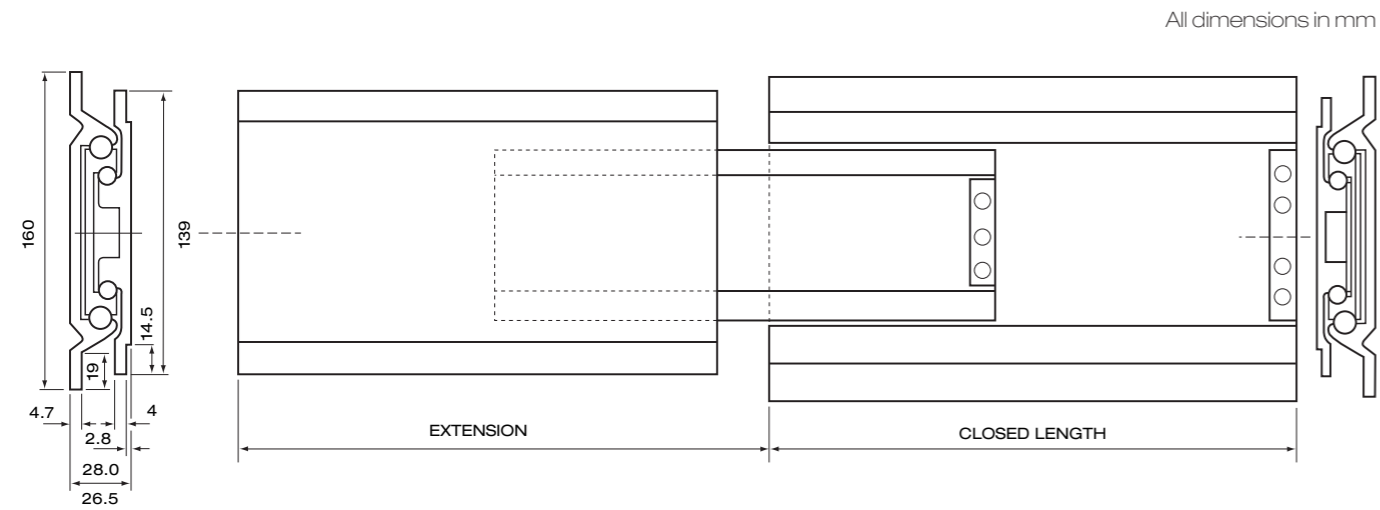
Type Right/Left	Closed Length	Extension Length	No. of Fixing Holes	Load Per pair
				Kg
220/230-300	330	300	6	55
220/230-350	380	350	7	62
220/230-400	430	400	8	71
220/230-450	480	450	9	78
220/230-500	530	500	10	84
220/230-550	580	550	11	88
220/230-600	630	600	12	90

5040 Range of Slides 100% Extension



Type	Closed Length	Extension Length	No. of Fixing Holes		Load Per pair
			A	B	
					Kg
5040-300	300	300	50	142.5	260
5040-350	350	350	25	167.5	257
5040-400	400	400	50	192.5	245
5040-450	450	450	75	217.5	238
5040-500	500	500	100	242.5	230
5040-550	550	550	125	267.5	220
5040-600	600	600	150	292.5	210
5040-650	650	650	175	317.5	200
5040-700	700	700	200	342.5	195
5040-750	750	750	225	367.5	182
5040-800	800	800	250	392.5	178
5040-850	850	850	275	417.5	168
5040-900	900	900	300	442.5	160
5040-950	950	950	325	467.5	150
5040-1000	1000	1000	350	492.5	140

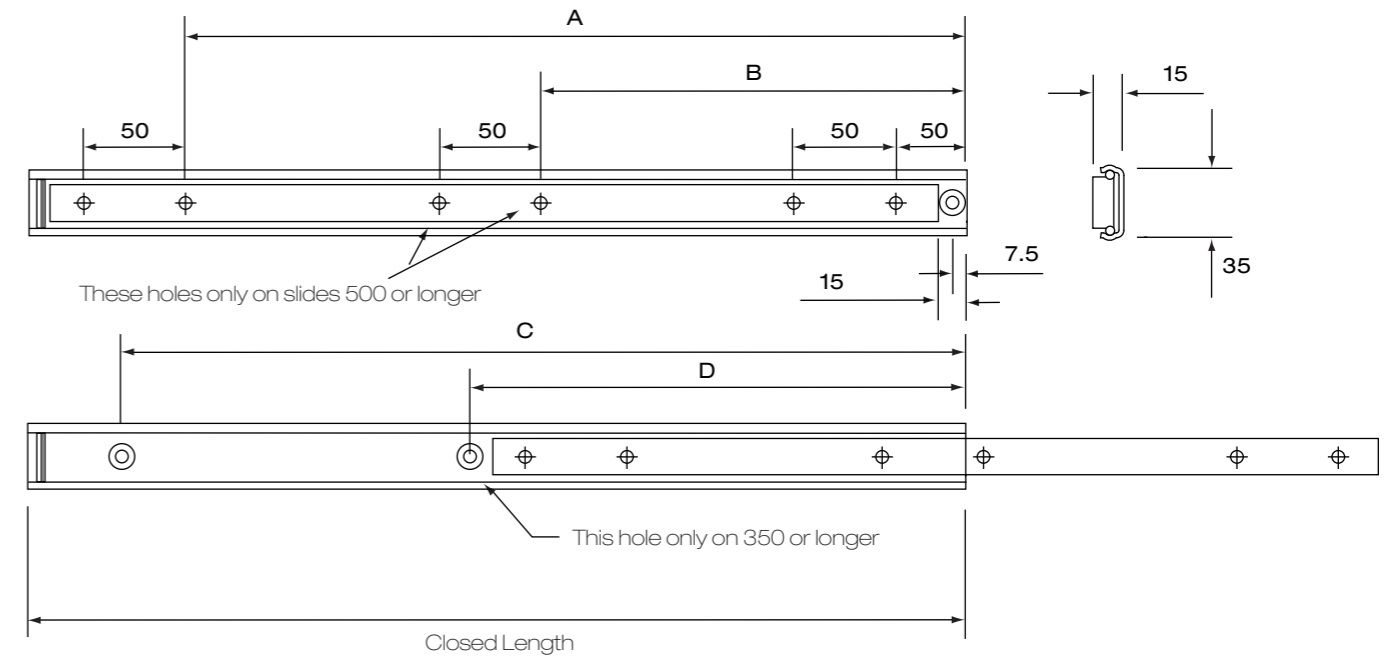
5013 Range of Slides 100% Extension



Standard = No holes
Holes = By request

Type	Closed Length	Extension Length	Load Per pair (Lying) Kg	Load per pair (Standing) Kg
5013-300	300	300	150	320
5013-350	350	350	140	300
5013-400	400	400	120	270
5013-450	450	450	110	255
5013-500	500	500	85	235
5013-550	550	550	75	215
5013-600	600	600	60	200
5013-650	650	650	55	175
5013-700	700	700	45	160
5013-750	750	750	40	145
5013-800	800	800	35	130
5013-850	850	850	32	118
5013-900	900	900	29	105
5013-950	950	950	28	90
5013-1000	1000	1000	28	80

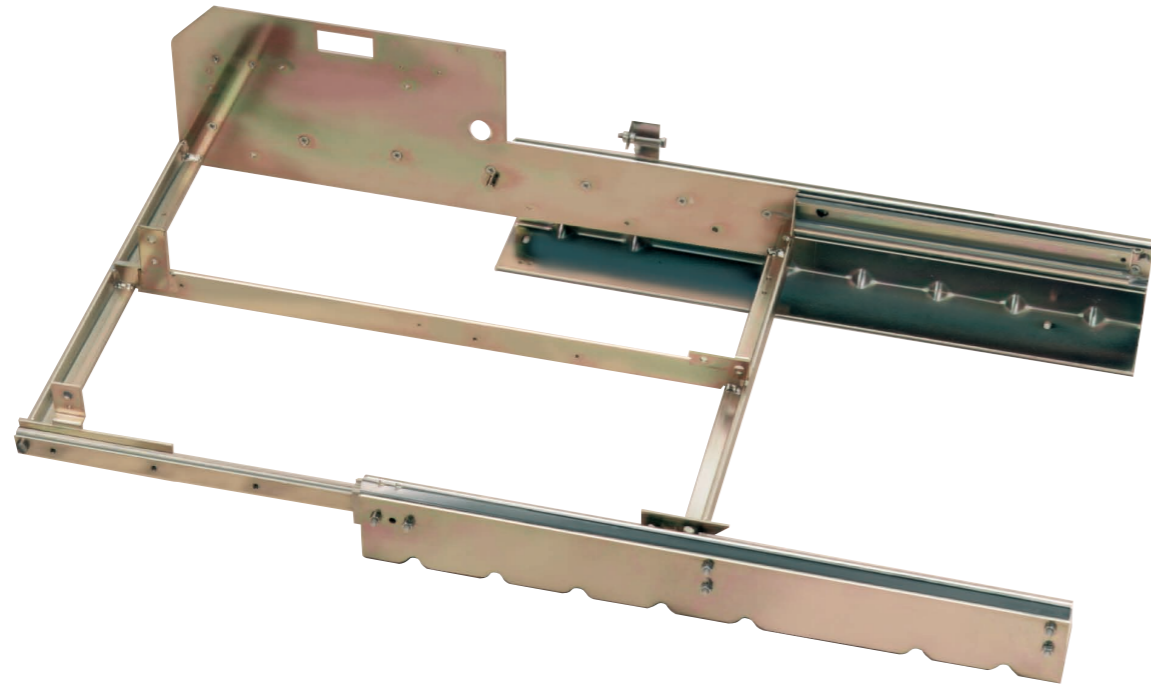
5020 Range of Slides



Type	Closed Length	Extension Length	A	B	C	D	Load Per pair Kg
5020-300	300	156 (52%)	200	-	250	-	100
5020-350	350	206 (59%)	250	-	300	125	95
5020-400	400	256 (64%)	300	-	350	150	90
5020-450	450	282 (63%)	350	-	400	175	85
5020-500	500	300 (60%)	400	-	450	200	80
5020-550	550	324 (59%)	450	250	500	225	75
5020-600	600	374 (62%)	500	275	550	250	70
5020-650	650	416 (64%)	550	300	600	275	65
5020-700	700	466 (67%)	600	325	650	300	60
5020-750	750	491 (66%)	650	350	700	325	55
5020-800	800	517 (65%)	700	375	750	350	50

For other lengths extension is 60 %

Competence in Engineering and Customizing



Index

Selecting Guide	page	4
5020 Steel	page	5
5030 Steel	page	6
5040 100 % Ext. Steel	page	7
5040 140 % Ext. Steel	page	8
210 Aluminium	page	9
220/230 Aluminium	page	10
5006 Aluminium	page	11
5013 Aluminium	page	12
3045 Steel Sheet Metal	page	13
Competence in fabrication and customizing	page	14
One partner for linear components	page	15

Please feel free to contact Rollco if you need help with selection from our standard range or have special requirements.

We do make a wide range of customized Telescopic slides. Our Engineers are specialist in Linear Motion products.

It is our goal to advise you the right solution for your application to secure that you get the best possible solution in relation to the price.

