

# STAINLESS C-RAIL



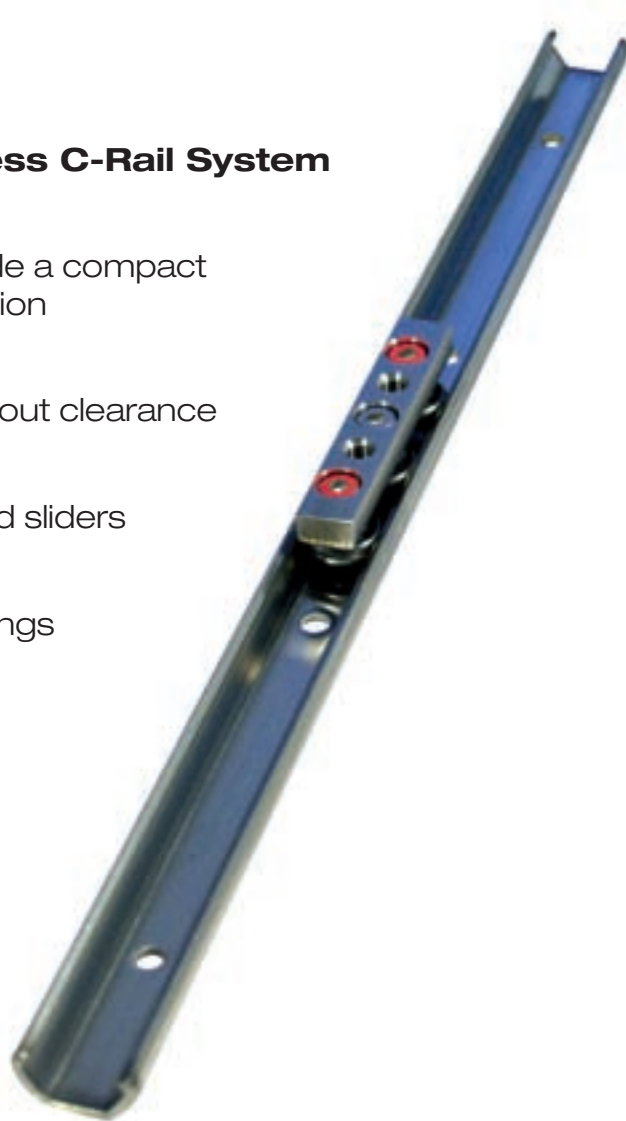
**ROLLCO** LINEAR SOLUTIONS 

## Index

Technical information	page 3
Standard stainless types	page 4
Standard stainless types	page 5
Rollers	page 6
Other stainless Rollco components	page 7

## Advantages of Stainless C-Rail System

- Internal raceways provide a compact and well protected solution
- Standard hole-pitch
- Movement of slider without clearance
- Adjustable preload
- Easy mounting of rail and sliders
- Low Noise
- Lifetime lubricated bearings

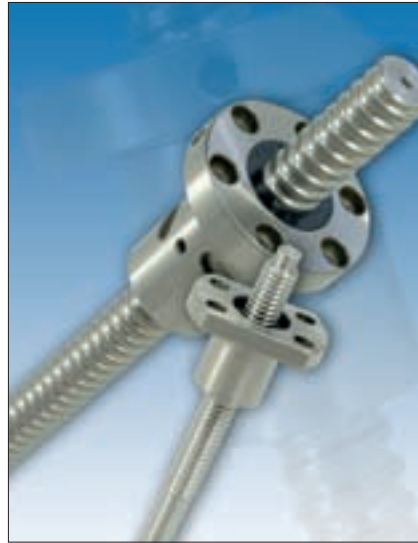


## One partner for Stainless linear components

We supply a wide range of corrosion resistant products direct from stock .  
Please contact us for more information.



**BALL BEARINGS:**  
Linear ball bearings and  
hardened steel shaft.

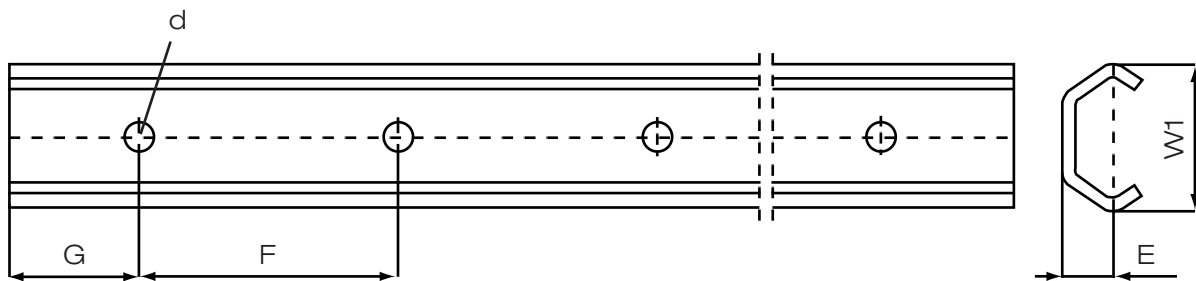
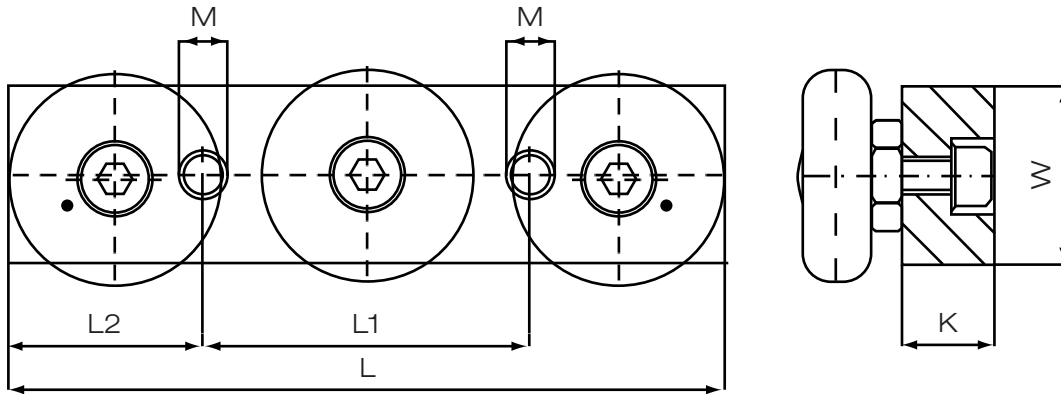


**BALL SCREWS:**  
Cylindrical and flange-nut.



**MINIATURE:**  
Range from 3 mm up to  
15 mm.

# STAINLESS C-RAIL

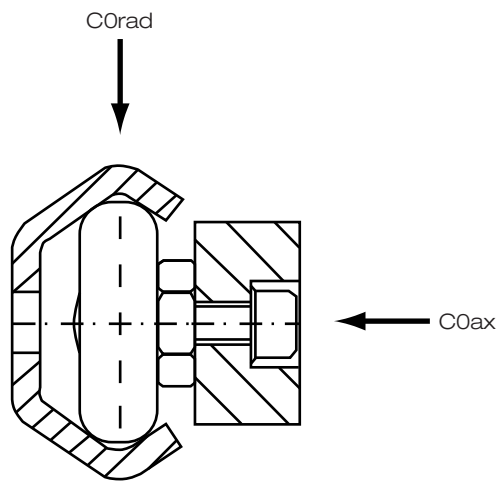
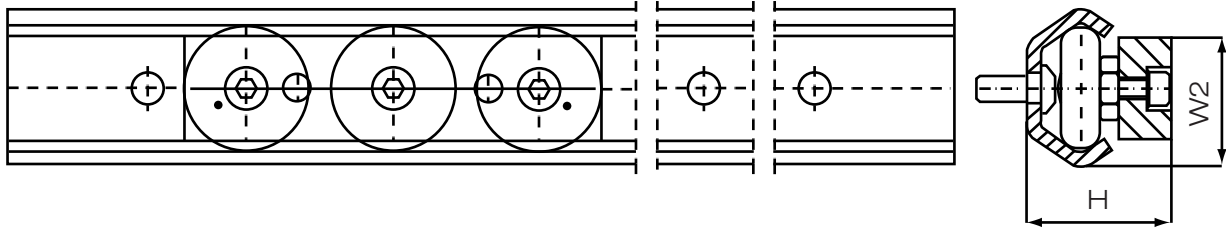


## SLIDER

Dimension: mm

Size	Rail Designation	Slider Designation	Height		Width			Length L	Mounting Holes			
			H	E	W2	W	W1		M	L1	L2	K
20	SXTE20	LXBE20-060-2RS	17.8	6.9	15	10	20	60	M5	20	20	6
30	SXTE30	LXBE30-080-2RS	26.5	10	25	20	30	80	M6	35	22.5	10
45	SXTE45	LXBE45-120-2RS	41.5	15.5	37,8	30	45,7	120	M8	55	32.5	15

# STAINLESS C-RAIL

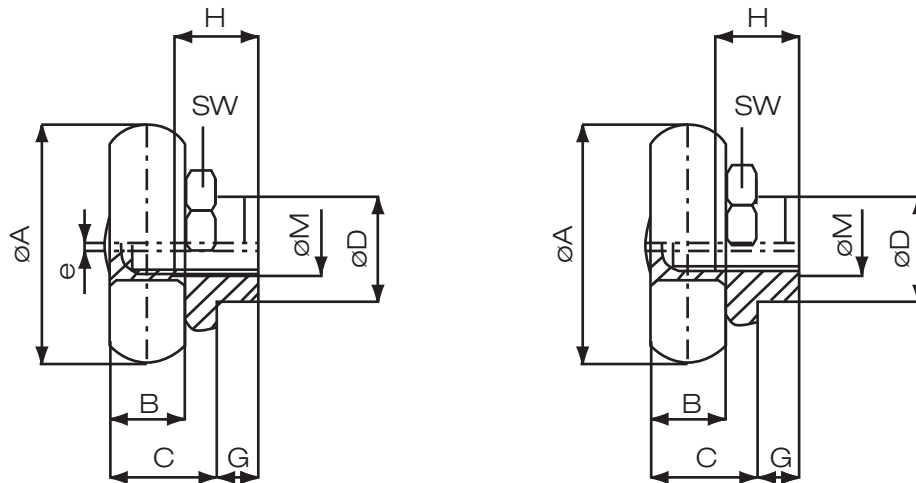


## RAIL

Dimension: mm

Size	Pitch F	Bolt Hole d	G	Max length of Rail	Load capacity		Weight Slider (Kg)	Weight Rail (Kg/m)
					C0 rad(N)	C0 ax(N)		
20	80	ø5	40	2000	200	150	0.04	0.45
30	80	ø6.5	40	3040	480	360	0.17	0.87
45	80	ø9	40	3040	1100	820	0.6	2.3

# Rollers



Roller type	Dimension mm									Load C	Capacity C0rad
	A	B	C	G	D	M	H	SW	e	N	N
RXBA20-2RS	14	4	6.9	1.8	6	M4	6	8	0.4	550	310
RXBA30-2RS	22.8	7	10	3.8	10	M5	7	13	0.6	1.700	890
RXBA45-2RS	35.6	11	16.5	4.5	12	M6	12	15	0.8	5.700	2.640
RXBN20-2RS	14	4	6.9	1.8	6	M4	6	8	-	550	310
RXBN30-2RS	22.8	7	10	3.8	10	M5	7	13	-	1.700	890
RXBN45-2RS	35.6	11	16.5	4.5	12	M6	12	15	-	5.700	2.640

Special sliders and rollers.

In this Catalogue you will find the standard slider with 3 rollers. The rollers can also be mounted direct into your application or we can make special sliders according to your need. Please contact us for more information.

## Technical information

**Temperature:** -30 - +100 degrees C.

**Speed:** Maximum 1 m/s

**Rail material:** Steel 1.4301 (Aisi 304)

**Slider body material:** Steel 1.4301 (Aisi 304)

**Roller material:** Steel 1.4112

**Roller sealing:** All rollers are 2RS sealed

**Lubrication of rollers:** All rollers are lubricated with food grease

**Fixing screws for rails:** Socket button head screw ISO 7380.

For size 20: M4, for size 30: M5 for size 45: M8

**Wipers:** Wipers available in different designs.

Contact Rollco for more information

## Cad-Files available on the internet

